

ETCHING PASSIVATION

TPV AUTOMOTIVE

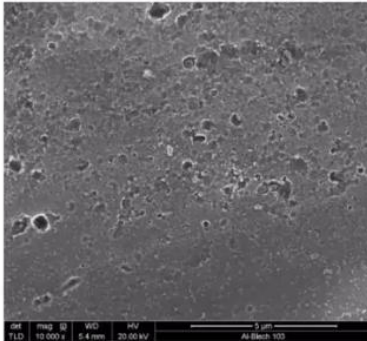


ETCHING PASSIVATION

Preparing a defined surface for following processes:

- Formation of a conversion coating based on Ti
- Provide corrosion protection
- Provide paint or sealant adhesion

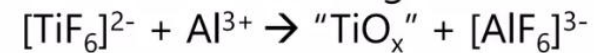
Degreased Al-panel



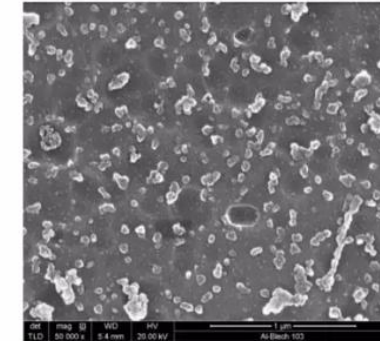
1) Etch-attack on the Aluminum



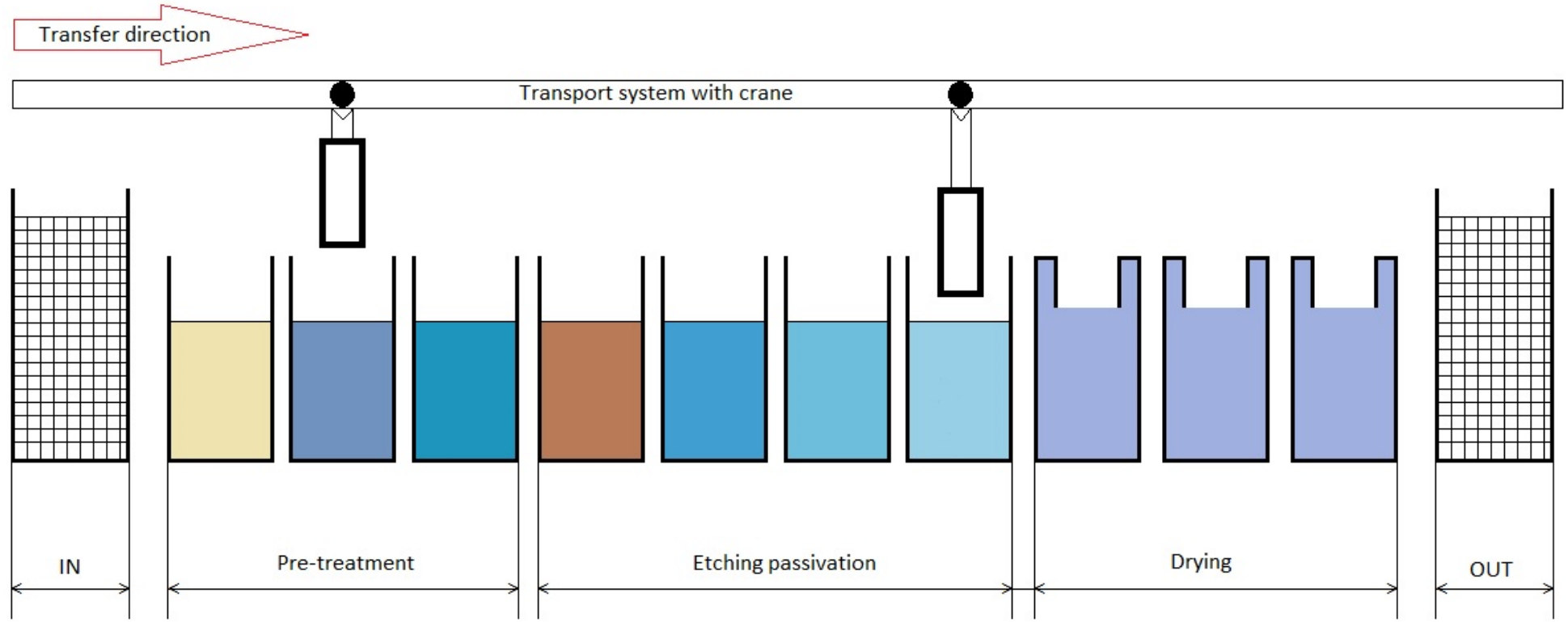
2) Formation of Ti-Oxide-Coating



After 2040-treatment



PROCESS



■ Degreasing
■ Rinse 1 - tap water
■ Rinse 2 - tap water

■ Etching passivation
■ Rinse 3 - tap + DI water
■ Rinse 4 - DI water
■ Rinse 5 - DI water

■ Drying
■ Hanger with products

NORMS

In our process we can provide the requirements of the following **OEM specifications**

- **Volvo:** accepted with etc-passiv., no dedicated norm
- **BMW:** BMW PV 97022
- **Daimler:** DBL_1175.11 (Mercedes-Benz)
- **Volkswagen:** VW TL96223 & TL82428
- **JLR:** TJLR-50-5002-2019



MATERIALS

- Degreasing: HENKEL
 - BONDERITE C-AK 1580
 - BONDERITE C-AD 1270
- Etching passivation: HENKEL
 - BONDERITE M-NT 2040 R2



CAPACITIES

Washing line 1

- Bath size:
1000 x 890 x 1470 mm
- Weight: 200 kg

Washing line 2

- Bath size:
 - 500 x 800 x 1470 mm
- Weight: 400 kg

Types of material,
suitable for
ETCHING PASSIVATION:

- ALUMINIUM ALLOY